



For the **Commercial Range** of **Colours**



# Formica Commercial Range

With print designs and solid colours developed to complement one another tonally, the Formica Commercial Range will help you create interiors with style and harmony.

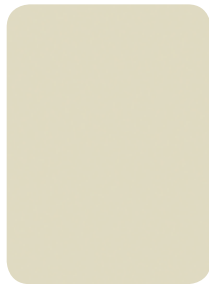
Pearl finish has been chosen as the standard option as this practical finish conceals minor scratching and finger marking better than flat finishes, so the end product looks better for longer.



Antique Wiluna White



Prairie Beige



Flaxon



Rock Salt



Streetlight



Gentle Beige



Idyllic

**NEW**



Velveteen



Bark



Doe Skin



Bliss Shitake

**NEW**



Papiro Chalk



Smoke Melange

**NEW**



Graphite



Charred Oak



Fini Chocolate



Vicenza Walnut



Prestige Walnut



Natural Oak



Refined Oak



Lemon Tree



Fini Blonde



Urban Wood



Metro Wood

Formica Edging is also available in all commercial decorated colours, in either melamine or ABS high impact edging.

For Formica Decorated Board technical information please refer to the technical datasheets available on the professional pages at [formica.com.au](http://formica.com.au)



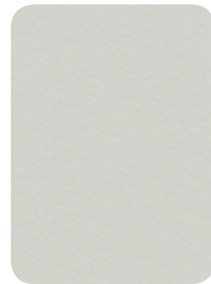
Warm White



White Silver



Silver Strata



Seal Grey



Snow Elm

NEW



Iron Ore



Dawn Grey



Hotham Oak

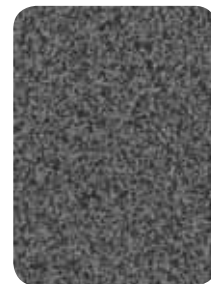
NEW



Brushed Silver



Storm



Ironstone



Deep Anthracite



Mocha



Fini Wenge



Straight Grain  
Wenge



Black



Bliss Cinder

NEW



Habitat

NEW



Euro Beech



Golden Beech



Cherry



South West  
Jarrah

## Formica Decorated Panel Commercial Colour Service Offer

Decors	46
Delivery Lead Time	Next day delivery if the product comes from the state warehouse. Dispatched within seven working days if the product comes from factory stock. Your sales representative will advise about local stocking policy and indicative transportation time from the factory to your location.
Standard Particleboard Sheet Size	Either 2400mmx1800mm sheet size or 3600mmx1800mm sheet size – depending on state inventory policy (which reflects local demand). Plant stock is held in 3600mmx1800mm in 18mm and 25mm thicknesses. Indicated Standard Particleboard options in 2400mmx1800mm (18mm and 25mm) and 3600mmx1800mm (33mm) are Made to Order (MTO). Your sales representative will advise about local stocking policy and indicative transportation time from the factory to your location.
Standard Particleboard Thicknesses	18mm and 25mm are stocked for the 46 commercial decors. 3600mmx1800mm (33mm) is available as MTO. Note that we hold normal commercial quantities of inventory. Large orders of individual line items may be considered to be MTO in the normal lead time.
Melamine Edging	22mm Preglued Edging is available for all decors in 50lm rolls. 22mm Unglued Edging is available for all decors in 100lm rolls.
ABS Edgings	21mm, 22mm, 29mm and 38mm matching edgings are available in 100lm rolls for all 40 decors.
Make to Order	If substrates or thicknesses other than the Standard Particleboard (above) are required, customer service or your sales representative will identify options that are available and lead time. For complete details on the Formica Decorated Panel offer please refer to the Formica Availability Chart.

## For more about **Formica**

### **For peace of mind**

For maximum performance and durability, Formica is manufactured to Australian Standards and covered by a 7 year limited warranty.

### **For samples**

Call 1800 002 204.

### **For sales enquiries**

Call 132 136.

### **For information, tips and news**

Discover a valuable resource of design and renovation tips, technical information, care and cleaning, warranty and more.

## **formica.com.au**

Formica is marketed and distributed by The Laminex Group. A division of *LAMINEX GROUP PTY LIMITED* ABN 98 004 093 092. The colours depicted in this brochure are as close to the Formica colour collection as modern printing processes allow. Colour/finish combinations are subject to availability. Colours/finishes shown are available at the time of publication, but may be withdrawn. Dark colours and gloss finishes require more care and maintenance than light-coloured and lower-gloss surfaces. The Laminex Group recommends the use of laminate cleaning products (or mild household cleaning products) for dark colours, please visit our website, as above, for specific care and cleaning information. Please note that in certain lights or from certain angles wipe down marks may be visible. Formica laminates are no different than any other material in that darker colours will always show scratches and superficial wear and tear more readily than lighter colours. Formica laminates should be protected from strong direct sunlight as continuous exposure may cause discolouration or fading to the surface over time. Please obtain a copy of the terms and conditions of the applicable Formica 7 year limited warranty from The Laminex Group or visit our website. This warranty is in addition to any rights that may exist under the Trade Practices Act.

ASW 919215 FEB 10  
LAM0168